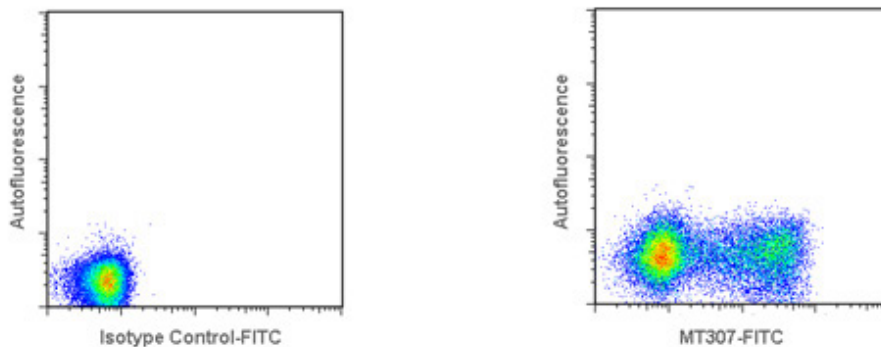


# Monoclonal Antibody to Bovine IFN- $\gamma$

FITC CONJUGATED

<b>Antibody:</b>	MT307
<b>Product code:</b>	3119-7
<b>Size:</b>	100 tests
<b>Immunogen:</b>	Recombinant bovine IFN- $\gamma$
<b>Isotype:</b>	Mouse IgG2a
<b>Specificity:</b>	Native and recombinant bovine IFN- $\gamma$ . Cross-reacts with native IFN- $\gamma$ from sheep and goat.
<b>Contents:</b>	Ready-to-use solution of conjugated antibody in sterile filtered (0.2 $\mu$ m) PBS with 0.2% BSA and 0.09% sodium azide.
<b>Purification:</b>	Purified from <i>in vitro</i> cultures by protein G affinity chromatography.
<b>Conjugation:</b>	The MT307 antibody has been conjugated to fluorescein isothiocyanate (FITC).
<b>Storage:</b>	Store product at 4-8°C or frozen at -20°C or below. Avoid repeated freezing/thawing.
<b>Applications:</b>	Detection of IFN- $\gamma$ producing cells by flow cytometry. 5 $\mu$ l is recommended for staining of 1 million cells in a total volume of 50 $\mu$ l.



Detection of IFN- $\gamma$  by flow cytometry in bovine peripheral blood mononuclear cells (PBMC). Bovine PBMC were stimulated with PMA/ionomycin for 16 hours in the presence of Brefeldin A. The cells were then fixed and permeabilized using 4% paraformaldehyde and saponin, and subsequently stained with anti-bovine IFN- $\gamma$  mAb MT307-FITC (right panel). The left panel depicts stimulated cells stained with a matched isotype control antibody. The dot plots derive from a lymphocyte gate. Flow cytometry was performed on a Guava EasyCyte Mini.

# MABTECH

Note: for research use only.  
Mabtech shall not be liable for the use or handling of the product or for consequential, special, indirect or incidental damages there from.



Developed and manufactured by MABTECH AB, Sweden, whose quality management system complies with the standards ISO 9001:2015 & ISO 13485:2016.

Mabtech AB (Head Office)  
Sweden  
Tel: +46 8 716 27 00  
mabtech@mabtech.com

Mabtech, Inc.  
USA  
Tel: +1 513 871-4500  
mabtech.usa@mabtech.com

Updated on 2022-11-14

[www.mabtech.com](http://www.mabtech.com)